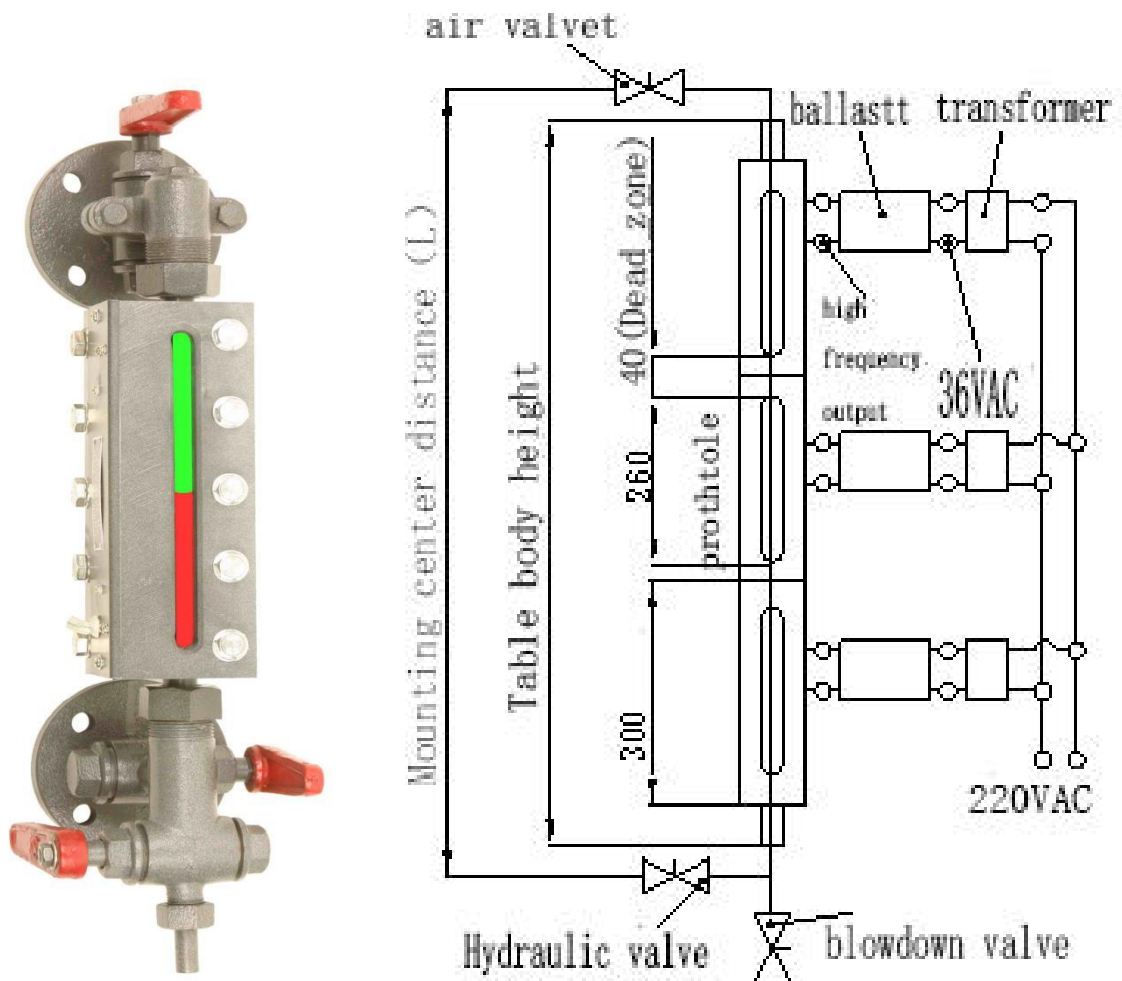


B49H - 2.5

Two-color liquid level meter

DATA SHEET



China chemical equipment association designated enterprises through the ISO9001 international quality system certification

China chemical equipment association standing director unit AAA quality reputation enterprises

The product structure is exquisite, the liquid vapor phase interface is clear, the water red vapor green, can observe the liquid level at a distance, safe and reliable;In particular, the anti-corrosion

liquid level gauge improves the corrosion resistance of the mirror and significantly prolongs the service life of the mirror.

Easy installation and maintenance, boiler in the operation of the replacement of the level gauge body.

Two-color liquid level meter

The B49H-2.5 two-color liquid level meter developed by the company has been patented by China, America, Britain, Japan and South Korea. It has been listed as a national major new product plan and won the ministerial scientific and technological progress award.

Liquid red gas green display, light source type can be used in remote observation of liquid level, no light source type is suitable for flammable and explosive site.

Structure, classification

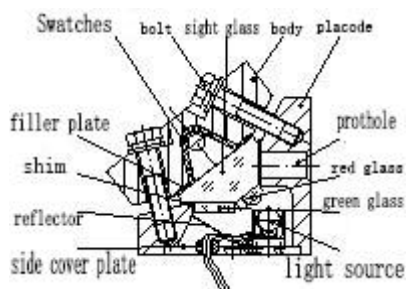
For the structure of two-color liquid level gauge, see "two-color liquid level gauge structure diagram".

Two-color liquid level meter is divided into light source type and no light source type according to the light source.

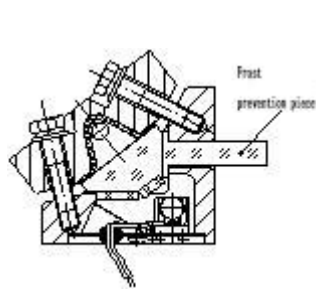
According to the function is divided into the general type, heat preservation type, anti - frost type.

See the figure below for the classification structures

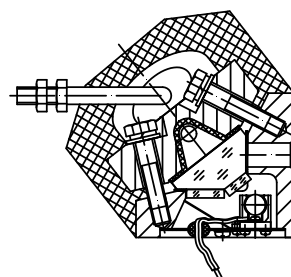
Schematic diagram of two-color level gauge structure



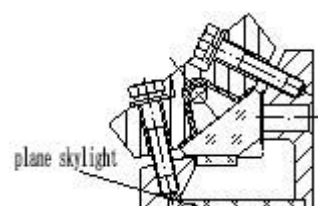
Ordinary type with light



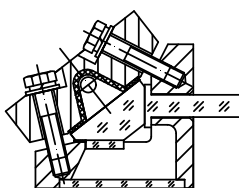
Antifrost type with light



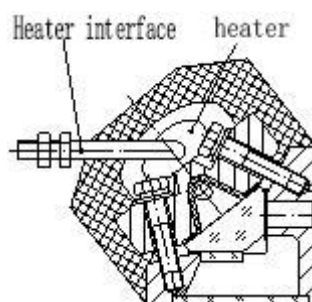
Heat preservation type with light



No light source common type



No light source frost-proof type



No light source Heat preservation

Two-color liquid level meter

Performance and parameters

Item	Performance and parameters					
PN MPa	PN1.6, PN2.5, PN4.0					
Test pressure	3.75MPa, 6MPa					
Medium temperature	-60~225 °C					
color	The liquid phase is red and the gas phase is green					
Viewing Distance	light source type: ≤60m					
C-C: mm	500	800	1100	1400	1700	2000
chamber height mm	470	770	1070	1370	1670	1970
Section	1	2	3	4	5	6
Power (with light source) W	8	16	24	32	40	48
weight kg	16	26.6	37.2	47.8	58.4	69
Sight glass and lamp tube length	Glass: 287mm, lamp: 255mm with power 36VAC or 220VAC					
Valve type、Diameter mm	Needle valve DN20					
Executive standard	HG/T2483-2006					

Model and order Instruction

B49H-2.5-□□-□□-DN□

DN (DN20)

Flange sealing face type:

1. Press HG20592: RF-raised face;M-male face;FM- female face
2. Press ANSI B16.5: RF (A) -raised face flange

Surface material: 1-carbon steel (optional) : 2-stainless steel

B-Heat preservation;F- Frost prevention;W- Two - color without light

Mounting center distance: mm

Two-color liquid level gauge, nominal pressure: 2.5MPa

Model Example 1: B49H-2.5 two-color liquid level gauge, nominal pressure 2.5MPa, installation center to center distance 1700mm, heat preservation type, two-color no light source, carbon steel, flange sealing surface type is RF, nominal diameter DN20.

Model Example: B49X2. 5-1700 - BW - RF

Example 2: B49H-2.5 two-color liquid level gauge, nominal pressure 2.5mpa, mounting distance from center to center 2000mm, anti-frost type, two-color light, stainless steel, flange sealing surface type Male face, nominal diameter DN25.

Tags: B49X2. 5-2000 - f - 2 m - DN25

Instruction for installation Two-color liquid level meter

Before installation, check whether the level gauge and valve are complete, whether the holes at both ends of the level gauge are blocked, and check whether the center distance of the level gauge is consistent with the center distance of the container. The steps for connecting the level gauge to the container are as follows:

1. Preparation before installation: after putting the big nut, pressure ring and sealing trap into both ends of the level gauge, tighten the retaining ring to the connecting pipe at both ends of the level gauge (the position of the retaining ring can be adjusted according to the field conditions).
2. After the lower valve is connected to the container pipe flange, Insert the connecting pipe of the level gauge into the connecting hole of the lower valve facing the lighting window of the level gauge in the direction of better lighting, Then insert the upper valve into the connecting pipe at the other end of the level gauge and connect with the container flange.
3. Observe the display effect of the level gauge at the apparent liquid position, rotate the liquid level meter body to select the best effect to display the liquid level, connect the large nuts at the upper and lower ends to the valve and tighten.

Use and maintenance

- 1, the use of steel ball automatic locking device valve level meter, in the beginning of use, first the air valve (upper valve) and the liquid valve (lower valve) a little open, when the liquid gas pressure balance must be fully open the valve.
2. Check the lamp power supply, is your field power voltage is 220VAC, lamp is 36VAC, then locally should connect a voltage regulator to change 220VAC to 36VAC between them.
3. Day lighting Windows and observation holes should be kept clean to ensure light transmittance, the liquid level gauge mirror washed with a brush.

4. According to the field analysis, the use of gas road to flush the level gauge, will accelerate the corrosion of the level gauge mirror, In order to avoid using gas channel to wash the liquid level meter, the cleaning of the lens can be brushed with a brush (add appropriate amount of detergent to achieve better results) to extend the service life of the lens.

5. The gasket, sealing ring and valve bushing on the level gauge shall be replaced at the appropriate time due to wear, corrosion and aging after long-time use.

6. the light source display is not bright, should check whether the circuit, transformer, ballast, lamp tube contact bad or damage, if not excluded, can take off the side cover plate, temporarily attached to a light source for use, to be processed and then restore the original.

If red or green glass is replaced, use heat-resistant sealant (silicone rubber) to seal the gap and side cover.

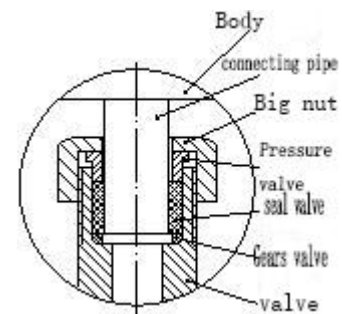
Special note: it is normal for the lens to be corroded in use. The corrosion rate is related to the use pressure, temperature, water quality, washing frequency and washing method. After the lens is corroded, it should be replaced in time to affect the liquid level display effect or cause the lens to break.

Ordering instructions

1. When ordering goods, please fill in the label specified in the instruction and indicate the medium of use.

2. Negotiate with the manufacturer for special specifications.

3. The sight glass is corroded in using will not apply for the three guarantees. If necessary, order from the manufacturer.



Company Name	: BONT TECHNOLOGIES NUSANTARA
Head Office	: Jl. Danau Sunter Utara – Komplek Rukan Sunter Permai Blok D No. 20
Phone/Fax	: +6221 651 9188 / +62216516107
Whatsapp	: +62815 1166 3171
Website	: www.bont-technus.com
Email	: info@bont-technus.com